

2020 EXPERT PREDICTIONS



2020 WHAT HAPPENED

The World Steel Association predicted a small increase of 1.7% in global steel prices for 2020



GLOBAL PRICE

That projection proved to be too conservative as the actual increase in steel prices was 3%

Experts predicted a slow down in Chinese steel production but did not foresee a global production decrease



PANDEMIC

Steel suppliers globally have been slow to turn on blast furnaces turned off during 2020 creating less supply

Demand dropped as much as 15.3% resulting in prices bottoming out in February 2020

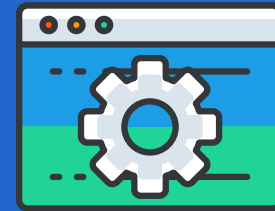


SHORT TERM DECLINE

Despite new predictions that steel demand would stay suppressed, demand spiked in December 2020



HARDWARE



SOFTWARE

Devices that are required to store and execute (or run) the software.



DEFINITION

Collection of instructions that enables a user to interact with the computer. Software is a program that enables a computer to perform a specific task.

Input, storage, processing, control, and output devices.



TYPES

System software, Programming software, and Application software.

CD-ROM, monitor, printer, video card, scanners, label makers, routers, and modems.



EXAMPLES

Quickbooks, Adobe Acrobat, Windows-Cs, Internet Explorer, Microsoft Word, Microsoft Excel.

Hardware starts functioning



To deliver its set of instructions,